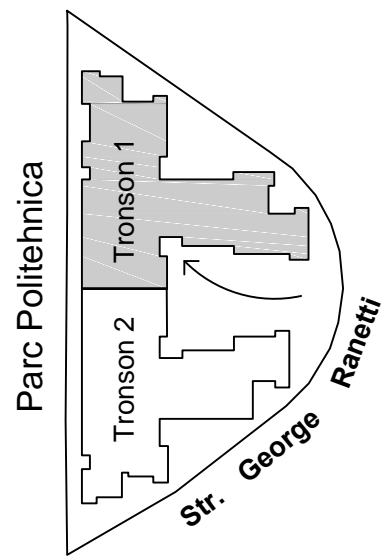
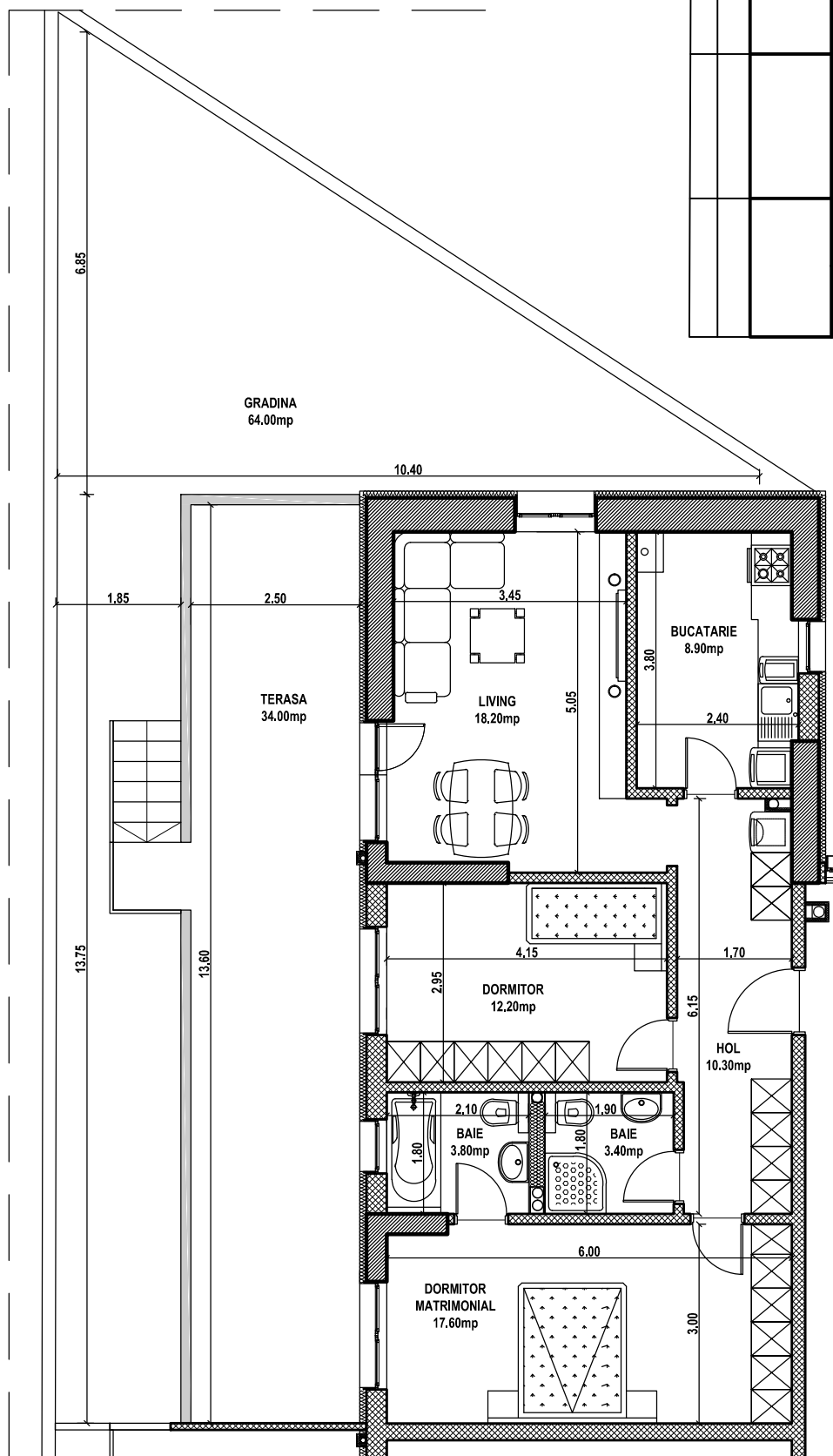
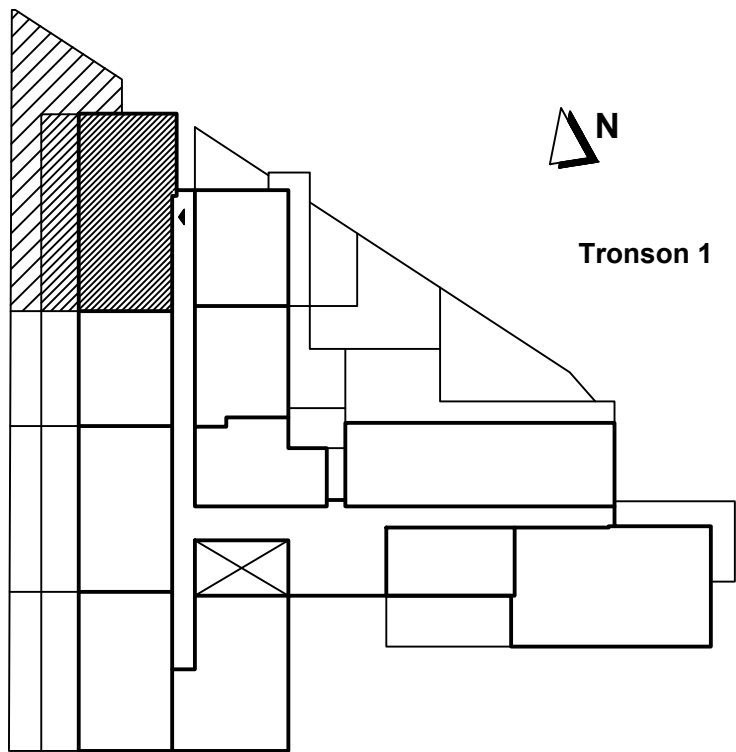


# Apartment 3 camere - 1006, parter, tronson 1 Str. George Ranetti, Nr. 2-8, Sector 6

Total suprafata construita apartament = 201.30 mp,  
din care:

- suprafata construita terasa = 36.60 mp
- suprafata construita gradina = 71.00 mp

Total suprafata utila apartament = 108.40 mp



AP. 1006